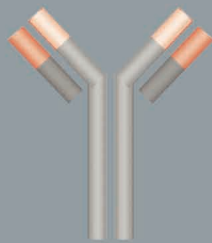
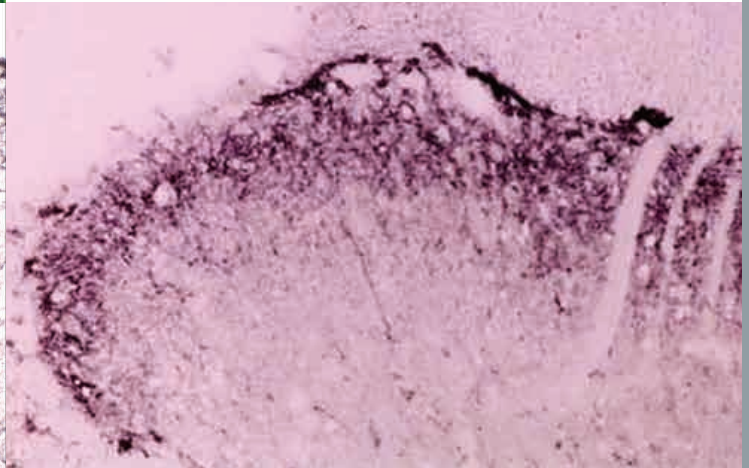
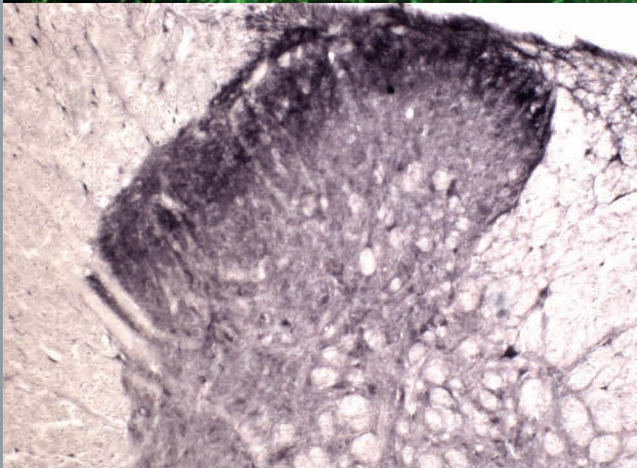
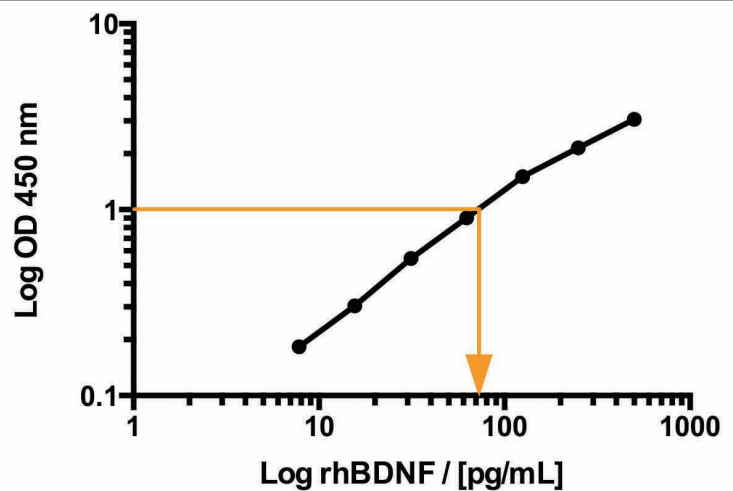
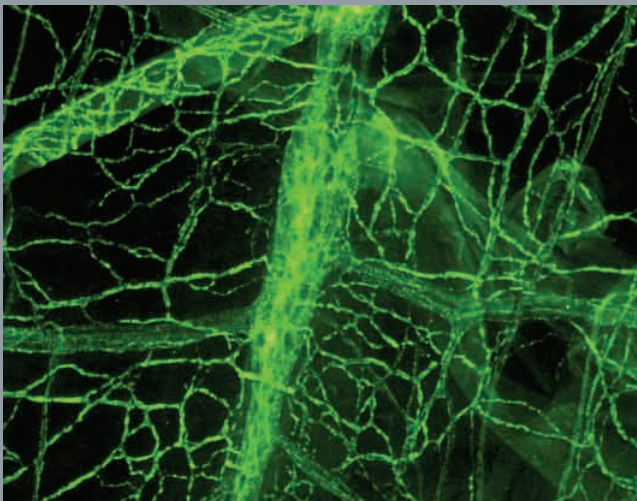


NEUROTROPHINS & THEIR RECEPTORS

ANTIBODIES, PROTEINS & ELISA KITS



biosensis
fine bioscience tools



Your Neuroscience Solution

Neurotrophic Factor - Receptors

Neurotrophins (also known as neurotrophic factors) are a group of growth factor proteins that induce the survival, development and function of neurons. Neurotrophins are secreted by target tissue and act by preventing the associated neuron from initiating programmed cell death – thus allowing the neurons to survive. Biosensis has provided a large selection of antibodies that will assist the study of neurotrophins and has been the worldwide leader in Neurotrophin antibodies and OEM supplier for over 20 years.

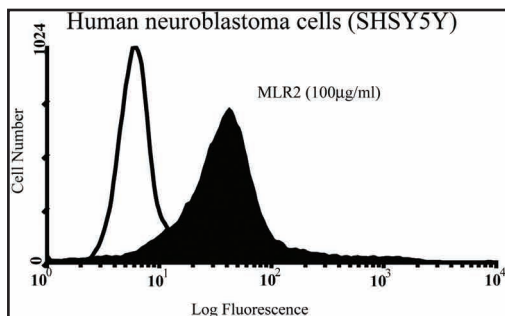


Figure 1. Flow cytometry analysis of endogenously expressed p75NTR on SHSY5Y cells. X-63 conjugated control IgG represents negative control for all experiments.

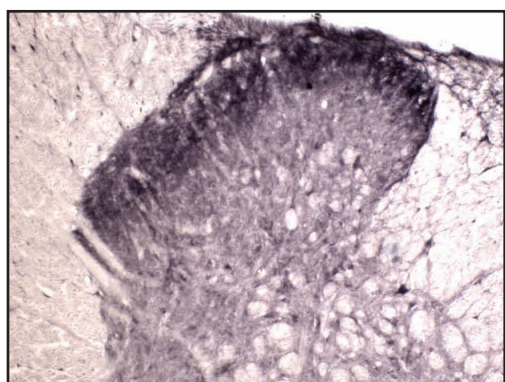


Figure 2. Immunohistochemical staining of Tyrosine Kinase Receptor A (TrkA) in rat spinal cord (free floating cryostat section) using rabbit antibody Cat# R-152-100 at a dilution of 1 in 2000. Courtesy of Professor Xin Fu Zhou, The Flinders University of South Australia.

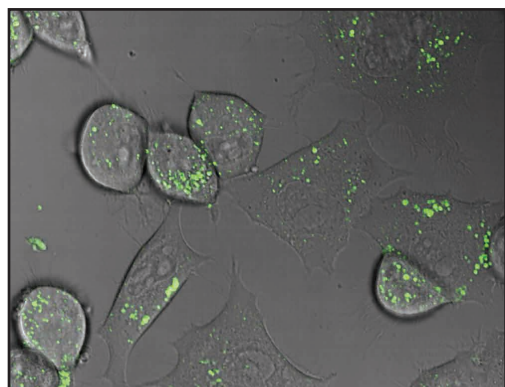


Figure 3. Live confocal imaging of intracellular trafficking of p75NTR using FITC labelled mouse monoclonal antibody to human p75NTR [MLR2], Cat# M-018-50-FT in NSC34 mouse motor neuron cell line.

Neurotrophic Factor Receptor Antibodies

Target	Purity	Code	Host	Reactivity	Applications
GFR α-1 NEW	ap	C-1659-100	Ch	Hu	WB, IF
GFR α-2	ws	R-067-100	Rb	Rat	WB, IHC
GFR α-2 NEW	ap	C-1660-100	Ch	Hu	WB, IF
GFR α-3	ws	R-068-100	Rb	Rat	WB, IHC
GFR α-3 NEW	Purified	C-1661-100	Ch	Hu	WB, IF
GFR α-4 NEW	ap	C-1662-100	Ch	Hu	WB, IHC
p75NTR [MLR2] ATTO	IgG	M-028-50-AT	Ms	Hu, Rat, Ms	WB, IHC, IF, FACS
p75NTR [MLR2]	IgG	M-009-100	Ms	Hu, Rat, Ms, Gp	WB, IHC, IF, FACS, Ipan
p75NTR [MLR2] FITC	IgG	M-018-50-FT	Ms	Hu, Rat, Ms	WB, IHC, IF, FACS
p75NTR [MC192] ATTO	IgG	M-026-50-AT	Ms	Rat	IHC, FACS
p75NTR [MC192]	IgG	M-006-100	Ms	Rat	WB, IHC, ELISA
p75NTR [MC192] FITC	IgG	M-016-50-FT	Ms	Rat	IHC, IF, FACS
p75NTR [ME20.4] ATTO	IgG	M-027-50-AT	Ms	Hu, Cat, Dog, Pig, Rb, Sh	IHC, IF, FACS
p75NTR [ME20.4]	IgG	M-011-100	Ms	Hu, Cat, Dog, Pig, Rb, Sh	IHC, IF, FACS, ELISA
p75NTR [ME20.4] FITC	IgG	M-017-50-FT	Ms	Hu, Cat, Dog, Pig, Rb, Sh	IHC, IF, FACS
p75NTR	ws	R-089-100	Rb	Rat	IHC, IF
RET NEW	ws	C-1663-100	Ch	Hu	WB, IF
Sortilin	ws	R-150-100	Rb	Hu, Rat, Ms	IHC, ELISA
TrkA (342-361aa)	ap	R-1362-100	Rb	Hu, Rat, Ms	WB
TrkA (rECD)	ws	R-152-100	Rb	Hu, Rat, Ms	IHC, ELISA
TrkA, phospho Y496		Coming soon	Ms	Hu	
TrkA		Coming soon	Ms	Hu	
TrkB [4D3-F10]	IgG	M-853-100	Ms	Hu	WB, ELISA
TrkB (23-36aa)	ws	R-121-100	Rb	Hu, Rat	IHC
TrkB	ws	R-149-100	Rb	Rat, Ms	IHC, ELISA
TrkB	Purified	Coming soon	Ms	Hu	
TrkB, phospho S478		Coming soon	Rb	Hu	
TrkB, phospho Y816		Coming soon	Rb	Hu	
TrkC	ws	R-151-100	Rb	Hu, Rat, Ms	IHC
TrkC		Coming soon	Ms	Hu	

Key: Whole serum (ws); Affinity Purified (ap); Mouse (Ms); Guinea pig (Gp); Human (Hu); Rabbit (Rb); Sheep (Sh); Chicken (Ch); Bovine (Bov); Goat (Gt); Immunohistochemistry (IHC); Immunofluorescence (IF); Immunopanning (IPan); Western Blot (WB); Immunohistochemistry/paraffin embedded IH(P); Immunoprecipitation (IP); Immunocytochemistry (IC)

Neurotrophic Factors

Extensive research spanning half a century has established a preeminent role for the neurotrophins in promoting and regulating neuron survival, axon growth, terminal arborization in neuronal development, modulation of synaptic plasticity, as well as neuroprotection in the adult nervous system. Their role in human diseases such as cancer and several psychiatric and neurodegenerative disorders has established them as potential targets for future therapeutic applications.

Neurotrophic Factor Antibodies							Neurotrophic Factor Antibodies						
	Target	Purity	Code	Host	Reactivity	Applications		Target	Purity	Code	Host	Reactivity	Applications
	BDNF	Purified	C-1517-500	Ch	Hu, Ms	ELISA		HBGF-1	ap	R-1352-100	Rb	Hu, Rat, Ms	WB
	BDNF (rHuBDNF)	IgG	R-017-500	Rb	Hu, Rat, Ms	WB, IHC, ELISA		HGF	ap	R-1353-100	Rb	Hu, Rat, Ms	WB
	BDNF (rHuBDNF)	ws	R-088-100	Rb	Hu, Rat, Ms	WB, IHC, ELISA		MANF NEW	Purified	M-1673-100	Ms	Hu	WB
	BDNF (rHuBDNF)	IgG	S-015-500	Sh	Hu, Rat	WB, IHC, ELISA		MANF NEW	ap	R-1675-100	Rb	Hu	WB
	BDNF (rHuBDNF)	ws	S-016-100	Sh	Hu, Rat, Ms	WB, IHC, ELISA		Neurturin (rHuNTN) NEW	IgG	M-1670-100	Ms	Hu	WB
	BDNF (162-176aa)	ap	R-1004-100	Rb	Hu, Rat, Ms, Rb	WB		Neurturin (rHuNTN) NEW	IgG	R-1669-100	Rb	Hu	WB
	BDNF (129-138aa)	IgG	R-066-500	Rb	Hu, Rat	WB, IHC, ELISA		Neurturin (rHuNTN)	ws	R-1561-100	Rb	Hu, Rat, Ms	IHC
	BDNF (129-138aa)	ws	R-083-100	Rb	Hu, Rat, Ms	WB, IHC, ELISA		Neurturin (rHuNTN)	ws	S-010-100	Sh	Hu, Rat, Ms	WB, IHC, ELISA
	BDNF (129-138aa)	ap	R-172-20	Rb	Hu, Rat, Ms	WB, IHC, ELISA		β NGF (nMsNGF)	Purified	C-1558-500	Ch	Hu, Rat, Ms	WB, IHC, ELISA
	BDNF	Purified	Coming Soon	Ms	Hu			β NGF (nMsNGF)	ws	G-185-100	Gt	Hu, Rat, Ms	WB, IHC, ELISA
NEW	CDNF [6G5]	IgG	M-1676-100	Ms	Hu	WB		β NGF (nMsNGF)	ap	S-051-50	Sh	Hu, Rat, Ms	WB, IHC, ELISA
NEW	CDNF [7D6]	IgG	M-1677-100	Ms	Hu	WB		β NGF (nMsNGF)	ap	R-174-20	Rb	Hu, Rat, Ms	WB, IHC, ELISA
NEW	CDNF	ap	R-1674-100	Rb	Hu	WB		β NGF (nMsNGF)	IgG	S-052-500	Sh	Hu, Rat, Ms	WB, IHC, ELISA
	CNTF	Purified	C-1526-500	Ch	Hu, Rat, Ms	WB, IHC, ELISA		β NGF (nMsNGF)	IgG	R-093-500	Rb	Hu, Rat, Ms	WB, IHC, ELISA
	CNTF	ws	S-025-100	Sh	Hu, Rat, Ms	WB, IHC, ELISA		β NGF (nMsNGF)	ws	S-050-250	Sh	Hu, Rat, Ms	WB, IHC, ELISA
	CNTF	ws	R-100-100	Rb	Hu, Rat, Ms	WB		β NGF (nMsNGF)	ws	R-085-100	Rb	Hu, Rat, Ms	WB, IHC, ELISA
	FGF, Basic	ap	S-076-100	Sh	Hu, Rat, Ms	IHC		NT3 (19-128aa)	ws	Mo-935-50	Ms	Hu	WB, ELISA
	FGF, Basic	ws	S-008-100	Sh	Hu, Rat, Ms	WB, IHC		NT3 (90-104/199-214aa)	Purified	C-1513-500	Ch	Hu, Ms	ELISA
	FGF-2	ap	R-1019-100	Rb	Hu, Rat	WB, IHC		NT3 (139-149aa)	ap	R-175-20	Rb	Hu, Rat, Ch	WB, IHC, ELISA
	FGF-4	ap	R-1623-100	Rb	Hu, Rat, Ms	WB		NT3 (139-149aa)	ap	S-060-50	Sh	Hu, Rat, Ch	WB, IHC, ELISA
	GDNF (101-118/199-211)	Purified	C-1518-500	Ch	Hu, Rat, Ms	WB, IHC, ELISA		NT3 (139-149aa)	IgG	R-096-500	Rb	Hu, Rat, Ch	WB, IHC, ELISA
	GDNF (rHuGDNF)	ws	R-080-100	Rb	Hu, Rat, Ms	WB		NT3 (139-149aa)	IgG	S-054-500	Sh	Hu, Rat, Ch	WB, IHC, ELISA
	GDNF (rHuGDNF)	ap	S-021-50	Sh	Hu, Rat, Ms	WB, IHC		NT3 (139-149aa)	ws	S-053-100	Sh	Hu, Rat, Ch	WB, IHC, ELISA
	GDNF (rHuGDNF)	ws	S-022-100	Sh	Hu, Rat, Ms	WB							
	GDNF		Coming Soon	Ms	Hu								

Key: Whole serum (ws); Affinity Purified (ap); Mouse (Ms); Guinea pig (Gp); Human (Hu); Rabbit (Rb); Sheep (Sh); Chicken (Ch); Bovine (Bov); Goat (Gt); Immunohistochemistry (IHC); Immunofluorescence (IF); Immunopanning (IPan); Western Blot (WB); Immunohistochemistry/paraffin embedded IH(P); Immunoprecipitation (IP); Immunocytochemistry (IC)

Neurotrophic Factors - continued

Neurotrophic Factor Antibodies continued

Target	Purity	Code	Host	Reactivity	Applications
NT3 (139-149aa)	ws	R-097-100	Rb	Hu, Rat, Ch	WB, IHC, ELISA
NT3 (rHuNT3)	IgG	S-057-500	Sh	Hu, Rat, Ch	WB, IHC, ELISA
NT3 (rHuNT3)	IgG	R-099-500	Rb	Hu, Rat, Ch	WB, IHC, ELISA
NT3 (rHuNT3)	ws	R-098-100	Rb	Hu, Rat, Ch	WB, IHC, ELISA
NT3 (rHuNT3)	ws	S-056-100	Sh	Hu, Rat, Ch	WB, IHC, ELISA
NT3 (174-189aa)	ap	R-1016-100	Rb	Hu, Rat, Ms, Rb	WB, IHC
NT4	IgG	R-102-500	Rb	Hu, Rat, Ms, Monkey	WB, IHC, ELISA
NT4	IgG	S-059-500	Sh	Hu, Rat, Ms, Monkey	WB, IHC, ELISA
NT4	ws	R-101-100	Rb	Hu, Rat, Ms, Monkey	WB, IHC, ELISA
NT4	ws	S-058-100	Sh	Hu, Rat, Ms, Monkey	WB, IHC, ELISA
NT4/NT5	Purified	C-1514-500	Ch	Hu, Ms	ELISA
proBDNF	ws	S-079-100	Sh	Hu	WB, ELISA
proBDNF	ap	R-176-20	Rb	Hu, Rat, Ms	WB, IHC
proBDNF	ws	R-087-100	Rb	Hu, Rat, Ms	WB, IHC
proBDNF	<i>Coming Soon</i>		Ms	Hu	
proNGF	ws	S-080-100	Sh	Hu, Rat, Ms	WB, IHC, IF, ELISA
proNGF	<i>Coming Soon</i>		Ms	Hu	
TNFAIP1	ap	R-1347-100	Rb	Hu, Rat, Ms	WB, IHC, IC
VEGF A (60-70aa)	ap	R-1074-100	Rb	Hu, Rat, Ms, Rb	WB, IHC
VEGF-D (101-115aa)	ap	R-1369-100	Rb	Hu	WB

Neurotrophic Factor Proteins

Target	Code	Expression Source
CNTF	PE-003-100	E. coli
HGF	PE-1241-5	Human
NGF, beta	PE-1239-2	Human
NGF, beta	PE-1239-5	Human
NGF (2.5S)	PE-019-25	Mouse
NGF (2.5S)	PE-019-100	Mouse
NGF (2.5S)	PE-019-500	Mouse
NT3	PE-1246-2	Human
NT3	PE-1246-5	Human
SCF	PE-1242-2	Human
SCF	PE-1242-5	Human
SCFR	PE-1243-25	Human
SCFR	PE-1243-50	Human

Key: Whole serum (ws); Affinity Purified (ap); Mouse (Ms); Guinea pig (Gp); Human (Hu); Rabbit (Rb); Sheep (Sh); Chicken (Ch); Bovine (Bov); Goat (Gt); Immunohistochemistry (IHC); Immunofluorescence (IF); Immunopanning (IPan); Western Blot (WB); Immunohistochemistry/paraffin embedded IH(P); Immunoprecipitation (IP); Immunocytochemistry (IC)



Figure 1. Immunohistochemical staining of Neurotrophin 3 (NT3) in crushed rat peripheral nerve using rabbit antibody to recombinant human NT3, Cat# R-098-100.



Figure 2. Immunohistochemical staining of Neurotrophin 3 (NT3) in rat Purkinje cells of the cerebellum using rabbit antibody to mouse NT3, Cat# R-175-20.

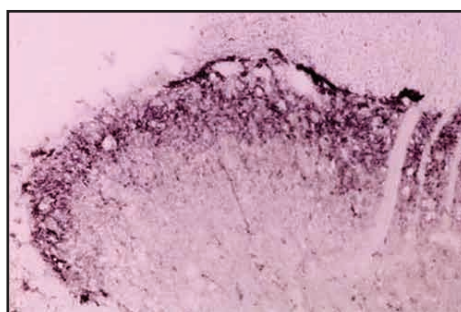


Figure 3. Pro-BDNF staining within the rat spinal cord dorsal horn. Normal cryostat sections of adult rat cord were stained with recombinant human anti-proBDNF Cat# R-176-20 and detected with HRP labelled anti-rabbit antibody. Dilution 1:2000 in Human mouse and rat. (Image courtesy of Dr Xin-fu Zhou).

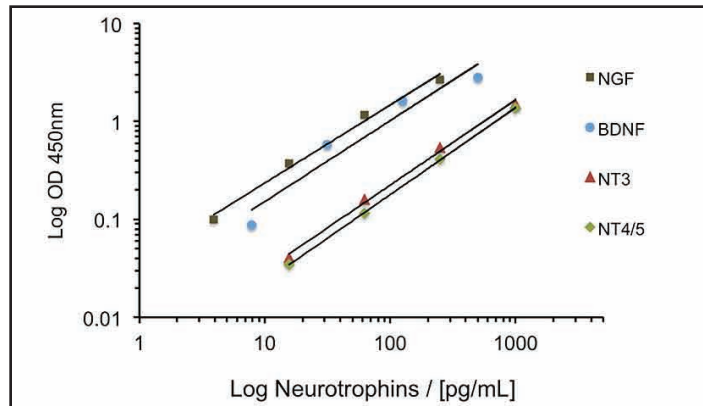


Figure 4. Immunohistochemical staining of brain derived neurotrophic factor (BDNF) in rat spinal cord using rabbit polyclonal to recombinant human BDNF, Cat# R-088-100.

New Multi-Neurotrophin Screen *Rapid*[™] ELISA Kit

Biosensis has just released their new Multi-Neurotrophin Screen *Rapid*[™] ELISA kit that allows quick quantification of **BDNF**, **NGF**, **NT-3** and **NT4/5** all from one assay. Save time and samples using the all-in-one Neurotrophin Screen ELISA kit which takes less than 4 hours. This new and convenient ELISA is suitable for testing in cell culture, supernatants and plasma from a wide range of species including Human, Mouse and Rat.

- Quickly screen experimental samples for the detection and quantification of all 4 Neurotrophins with a single kit
- Our 2-Plate kit consists of four sets of six strips for each Neurotrophin, allowing for the assaying of **16 samples per neurotrophin tested** and a full range of standards, all run in duplicate
- The kit comes complete with all detection reagents and is **ready-to-use**
- Achieve fast results using the **Short Protocol!**



Typical Standard Curves when using the Short Protocol of the new Multi-Neurotrophin Screen *Rapid*[™] ELISA Kit. Cat# **BEK-2227-2P**

Multi-Neurotrophin Screen *Rapid*[™] ELISA Kit

	Target	Code (2 Plate)	Code (1 Plate)	Species reactivity
NEW	Multi-Neurotrophin Screen <i>Rapid</i> [™]	BEK-2227-2P	BEK-2227-1P	Hu, Ms, Rat

biosensis.com
Make sense of it!

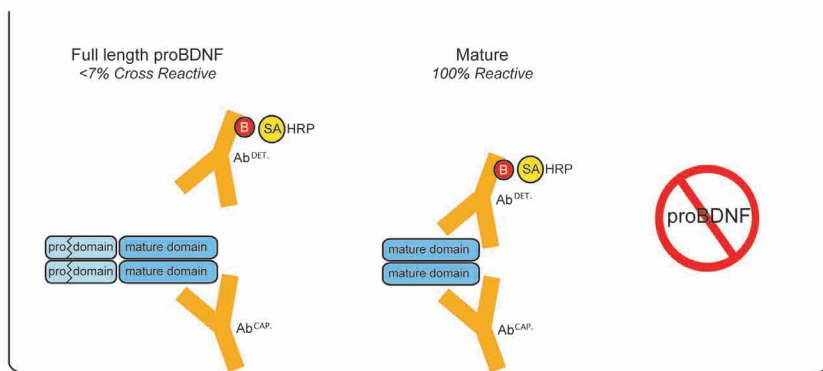
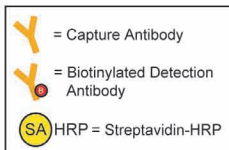
New *Rapid*[™] ELISA Kits - BDNF

- Now measure BDNF in serum, cell culture supernatants and brain extracts **in less than 3 hours**
- For the detection of **Mature BDNF** isoform independently of the proBDNF isoform
- Quantify BDNF in **Human and Rodent** samples against a **WHO approved BDNF standard**
- Our kits contain **pre-coated 96 well strip plates** - use only what you need!
- High sensitivity gives you the advantage of using **small sample volumes**
- **Focus** on your experiment -
let us take the worry out of reliable quantification of BDNF concentrations

What forms of BDNF are detected:

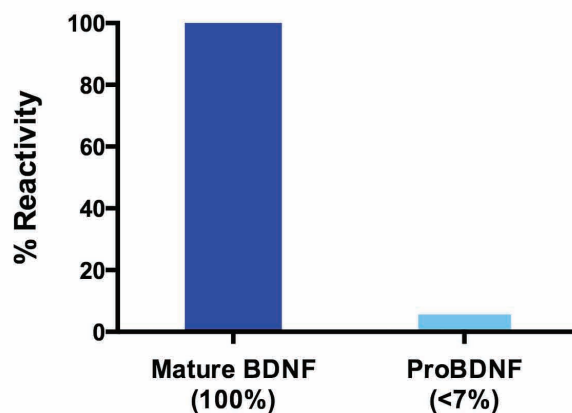
BDNF Rapid ELISA Kit Catalog No: BEK-2211

For the detection of Mature BDNF isoform independently of the proBDNF isoform.



Our BDNF *Rapid*[™] ELISA Kit Cat# BEK-2221-2P is specific for BDNF and shows little to no value when trying to measure proBDNF.

BEK-2211 BDNF Rapid ELISA



BDNF *Rapid*[™] ELISA Kit

Target	Code (2 Plate)	Code (1 Plate)	Species reactivity	Sensitivity	Range
BDNF <i>Rapid</i> [™]	BEK-2211-2P	BEK-2211-1P	Hu, Ms, Rat	2 pg/mL	7.8 pg/mL - 500 pg/mL

biosensis.com
Make sense of it!

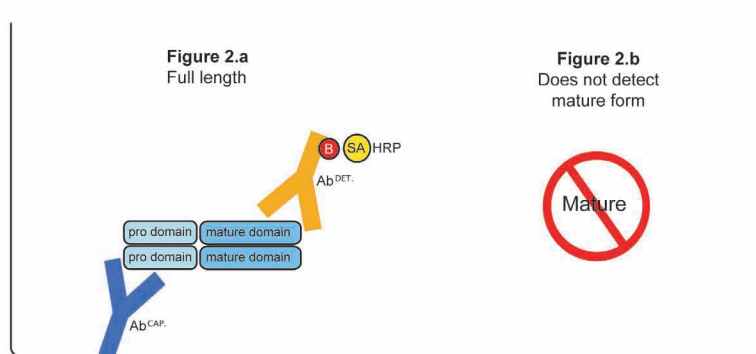
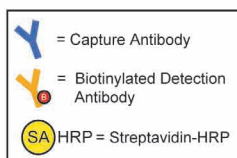
New *Rapid*TM ELISA Kits - proBDNF

- Specific measurement of proBDNF in serum, cell culture supernatants and brain extracts **in less than 3 hours**
- Detects only **proBDNF**, little to no cross reactivity with Mature BDNF
- Quantify proBDNF in **Human and Rodent** samples against a **Validated in-house proBDNF standard**
- **Pre-coated 96 well strip plates** - use only what you need!
- High sensitivity, **small sample volumes**, and great reproducibility
- **Focus** on your experiment - let us take the worry out of reliable quantification of proBDNF concentrations

What forms of proBDNF are detected:

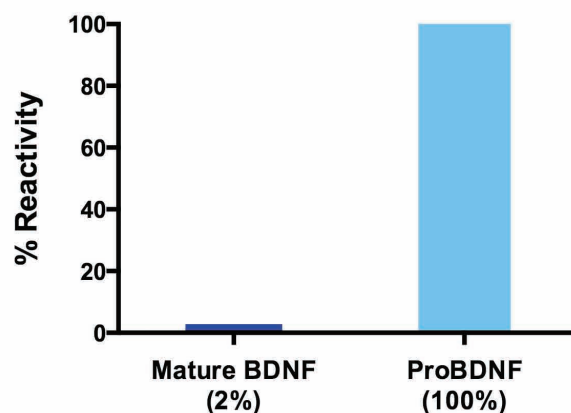
proBDNF Rapid ELISA Kit Catalog No: BEK-2217

Detection of BDNF in full length (Figure 2.a) in a single well. Note: The mature form is not detected (Figure 2.b).



Our proBDNF *Rapid*TM ELISA Kit Cat# BEK-2217-2P is specific for proBDNF and shows little to no value when trying to measure Mature BDNF.

BEK-2217 proBDNF Rapid ELISA



proBDNF *Rapid*TM ELISA Kit

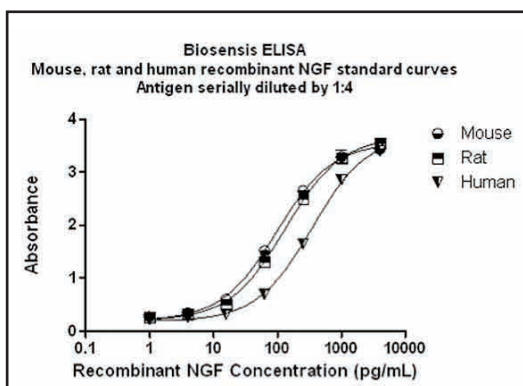
NEW

Target	Code (2 Plate)	Code (1 Plate)	Species reactivity	Sensitivity	Range
proBDNF <i>Rapid</i> TM	BEK-2217-2P	BEK-2217-1P	Hu, Ms, Rat	30 pg/mL	15.6 pg/mL - 1000 pg/mL

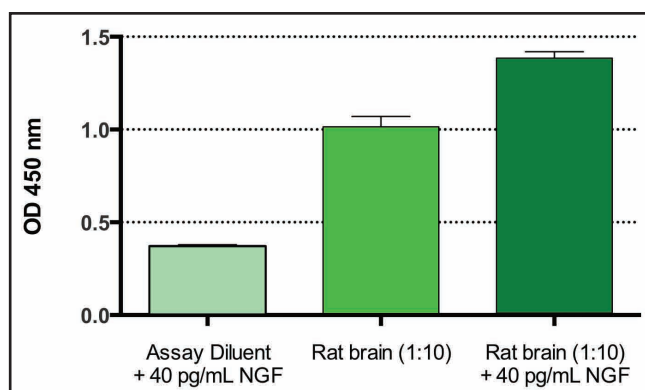
biosensis.com
Make sense of it!

New *Rapid*TM ELISA Kits - NGF

- Biosensis has redeveloped **faster** and more **sensitive** NGF ELISA Kits for human, mouse and rat NGF
- Now you can assay with high sensitivity and accuracy and get your results in **less than 4hrs**!
- All of our ELISA kits are available in **1-Plate** or **2-Plate** (96/192 well) formats!
- No cross reactivity with BDNF, NT3, NT4/5, GDNF or VEGF



• Representative standard curves of our NGF *Rapid*TM ELISA kits



• Spike and recovery experiment with NGF using BEK-2214-2P

NGF *Rapid*TM ELISA Kits

	Target	Code (2 Plate)	Code (1 Plate)	Species reactivity	Sensitivity	Range
NEW	NGF <i>Rapid</i> TM	BEK-2212-2P	BEK-2212-1P	Hu	2 pg/mL	3.9 pg/mL - 250 pg/mL
NEW	NGF <i>Rapid</i> TM	BEK-2213-2P	BEK-2213-1P	Ms	2 pg/mL	3.9 pg/mL - 250 pg/mL
NEW	NGF <i>Rapid</i> TM	BEK-2214-2P	BEK-2214-1P	Rat	2 pg/mL	3.9 pg/mL - 250 pg/mL

biosensis.com
Make sense of it!

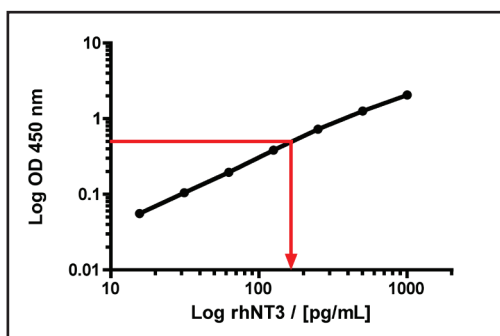
New *Rapid*[™] ELISA Kits - Neurotrophin 3

- Suitable for quantification of NT3 in **tissue extracts**, serum, plasma and cell culture media
- From a wide variety of **species** including human, rat and mouse

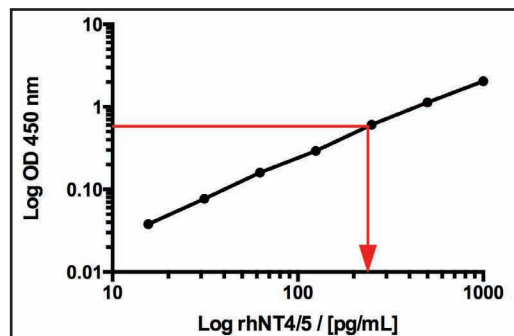
NT3 *Rapid*[™] ELISA Kit

NEW

Target	Code (2 Plate)	Code (1 Plate)	Species reactivity	Sensitivity	Range
NT3 <i>Rapid</i> [™]	BEK-2221-2P	BEK-2221-1P	Hu, Ms, Rat	15 pg/mL	15.6 pg/mL - 1000 pg/mL



Typical standard curve generated with our NT3 *Rapid*[™] ELISA Kit. Cat# BEK-2221-2P



Typical standard curve generated with our NT4/5 *Rapid*[™] ELISA Kit. Cat# BEK-2218-2P

New *Rapid*[™] ELISA Kits - Neurotrophin 4/5

Neurotrophin 4 (or sometimes NT4/5 to its friends, because of the early confusion in gene identification) is the fourth member of the neurotrophin family that modulate a wide range of neuronal functions within the central and peripheral nervous systems. Biosensis is pleased to announce the release of the NT4/5 *Rapid*[™] ELISA kit, to join the family of other neurotrophin and related kits in this fast format (We like to call them our "Get your results before lunch" kits!).

- Suitable for quantification of NT4/5 in **tissue extracts**, serum, plasma and cell culture media
- From a wide variety of **species** including human, primate, rat and mouse

NT4/5 *Rapid*[™] ELISA Kit

NEW

Target	Code (2 Plate)	Code (1 Plate)	Species reactivity	Sensitivity	Range
NT4/5 <i>Rapid</i> [™]	BEK-2218-2P	BEK-2218-1P	Hu, Ms, Rat, Monkey	25 pg/mL	15.6 pg/mL - 1000 pg/mL

New *Rapid*[™] ELISA Kits - NGFR/p75ECD

The Enigmatic p75NTR Neurotrophin Receptor

"They seek him here, they seek him there. Those Researchers seek him everywhere.... That damned elusive p75NTR!" (With apologies to Baroness Emmuska Orczy, *The Scarlet Pimpernel*).

p75NTR, beta Amyloid peptide and Alzheimer's disease:

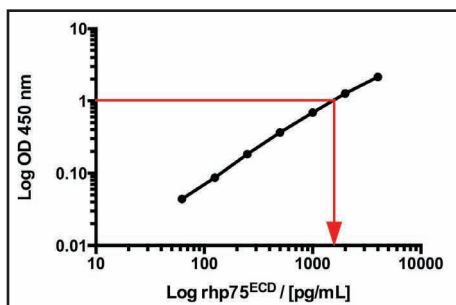
The intriguing finding that the neurotoxic effects of amyloid beta peptide are at least partially mediated by p75NTR is now understood to occur via a complex of the receptor with the Death Receptor-6 (DR6) protein Hu et al 2013 (PMID: 23559013). This finding provides yet another option for drug development in Alzheimer's disease.

p75NTR as a biomarker:

The first indication that p75NTR could function as a useful biomarker of disease or trauma was published 26 years ago by DiStefano and Johnson, 1988 (PMID: 2465632). A recent publication has progressed these early observations by showing a very strong correlation between p75NTR and disease progression in ALS (Amyotrophic Lateral Sclerosis) patients. Shephard et al 2014 (PMID: 24475283). This bodes well for both early diagnosis and drug development potential for p75NTR.

p75NTR in pain signaling:

While NGF stimulation of TrkA is well known to trigger pain in sensory neurons (and antibodies to NGF are a potent treatment for many types of pain), Lewin and Nykjaer 2014 (PMID: 24494677) have critically reviewed the evidence for a pro-NT / p75NTR / sortilin complex, and proposed a possible role in both pain and sensory neuropathies.



Standard curve of our new NGFR/p75ECD *Rapid*[™] ELISA Kit: Human (Catalog # BEK-2219-2P).

This standard curve generated in our laboratories is for demonstration purposes only, but can be used as a guide to expected performance. A standard curve should be generated for each assay.

NGFR/p75ECD *Rapid*[™] ELISA Kits

	Target	Code (2 Plate)	Code (1 Plate)	Species reactivity	Sensitivity	Range
NEW	NGFR/ p75ECD <i>Rapid</i> [™]	BEK-2219-2P	BEK-2219-1P	Hu	30 pg/mL	62.5 pg/mL - 4000 pg/mL
NEW	NGFR/ p75ECD <i>Rapid</i> [™]	BEK-2220-2P	BEK-2220-1P	Ms	20 - 40 pg/mL	62.5 pg/mL - 4000 pg/mL

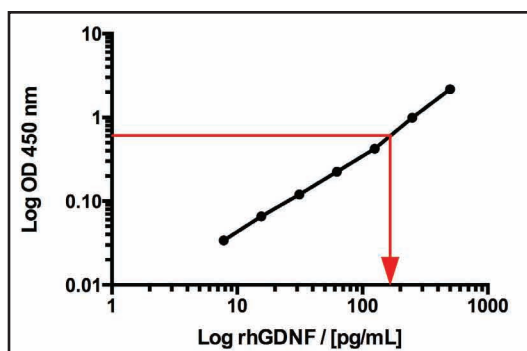
New *Rapid*[™] ELISA Kits - GDNF

- Suitable for quantification of GDNF in **tissue extracts**, serum, plasma and cell culture media
- From a wide variety of **species** including human, rat and mouse

GDNF *Rapid*[™] ELISA Kit

NEW

Target	Code (2 Plate)	Code (1 Plate)	Species reactivity	Sensitivity	Range
GDNF <i>Rapid</i> [™]	BEK-2222-2P	BEK-2222-1P	Hu, Ms, Rat	4 pg/mL	7.8 pg/mL - 500 pg/mL



Typical standard curve generated with our GDNF *Rapid*[™] ELISA Kit. Cat# BEK-2222-2P

Traditional Format ELISA Kits

Biosensis has over 150 ELISA Kits in the traditional format (non-*Rapid*[™] range). See more of our extensive range of Neurotrophin-related ELISA kits below:

Other Neurotrophin ELISA Kits - Traditional Format

Target	Code (2 Plate)	Code (1 Plate)	Species reactivity	Sensitivity	Range
TrkA	BEK-2201-2P	BEK-2201-1P	Rat	< 10 pg/mL	156 pg/mL - 10,000 pg/mL
TrkB	BEK-2178-2P	BEK-2178-1P	Ms	< 5 pg/mL	93.8 pg/mL - 6,000 pg/mL
CDNF	BEK-2216-2P	BEK-2216-1P	Hu	2-8 pg/mL	15 pg/mL - 960 pg/mL
CNTF	BEK-2303-2P	BEK-2303-1P	Rat	< 10 pg/mL	31.2 pg/mL - 2,000 pg/mL

Other Growth Factor ELISA Kits - Traditional Format

Target	Code (2 Plate)	Code (1 Plate)	Species reactivity	Sensitivity	Range
GDNF	BEK-2166-2P	BEK-2166-1P	Hu	< 4 pg/mL	31.2 pg/mL - 2,000 pg/mL
GDNF	BEK-2020-2P	BEK-2020-1P	Rat	< 4 pg/mL	31.2 pg/mL - 2,000 pg/mL
IGF1	BEK-2149-2P	BEK-2149-1P	Ms	< 5 pg/mL	62.5 pg/mL - 4,000 pg/mL
IGF1	BEK-2150-2P	BEK-2150-1P	Rat	< 5 pg/mL	62.5 pg/mL - 4,000 pg/mL
VEGF	BEK-2108-2P	BEK-2108-1P	Hu	< 1 pg/mL	31.2 pg/mL - 2,000 pg/mL
VEGF	BEK-2110-2P	BEK-2110-1P	Ms	< 2 pg/mL	15.6 pg/mL - 1,000 pg/mL
VEGF	BEK-2109-2P	BEK-2109-1P	Rat	< 1 pg/mL	15.6 pg/mL - 1,000 pg/mL

New Biosensis *Rapid*[™] ELISA Kits!

Biosensis is proud to announce the release of a new range of fast and sensitive *Rapid*[™] ELISA kits. Get the same sensitivity and specificity that you are used to, but now with the ease and speed that you desire as well: Quantification in less than 3 hours, start to finish!

Our *Rapid*[™] ELISA kits include:

- Protocol allowing completion between **2 - 4 hours (i.e., before lunch!)**.
- **Pre-coated 96 well strip plates** – use only what you need.
- High sensitivity, **small sample volumes**, and great reproducibility.
- Focus on your experiment – let us take the worry out of reliable **quantification of your target protein**.

Recent Reviews:

Since the release of our *Rapid*[™] range, we have had a number of research institutes test our kits and have had some outstanding positive feedback:

- “Best BDNF kit available on the market - we tested all of them”.
- “Works for serum and plasma samples without inhibition”.
- “Great batch-to-batch consistency”.
- “We have been waiting for a specific proBDNF kit”.

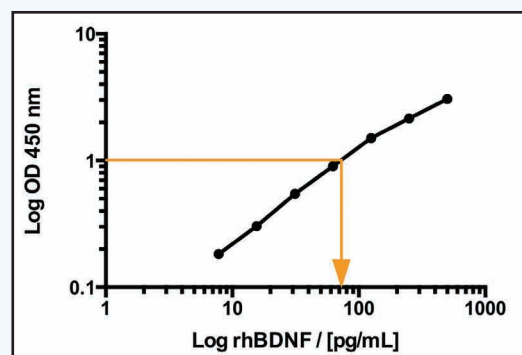


Image: Standard curve of our new BDNF *Rapid*[™] ELISA Kit (Catalog No# BEK-2211-2P).

Our range of *Rapid*[™] ELISA kits include:

- | | | |
|-------------------------------------|---|---|
| • BDNF <i>Rapid</i> [™] | • NT3 <i>Rapid</i> [™] | • GDNF <i>Rapid</i> [™] |
| • proBDNF <i>Rapid</i> [™] | • NT4/5 <i>Rapid</i> [™] | • proNGF <i>Rapid</i> [™] |
| • NGF <i>Rapid</i> [™] | • NGFR/p75ECD <i>Rapid</i> [™] | • Multi-Neurotrophin Screen <i>Rapid</i> [™] |

Contact us:

In the United States:
Biosensis International
Ph: 1800 605 5127
sales_US@biosensis.com

In Australia:
Biosensis Pty Ltd
Ph: 08 8352 7711
sales@biosensis.com

Address:
39 Winwood Street
Thebarton SA 5031
Australia

biosensis.com
Make sense of it!